

## QPD8-0-3000-2-N

8-Way, DC~3GHz, 2W

### Features:

- \* Small Size
- \* Low Insertion Loss

### Applications:

- \* Amplifiers
- \* Mixers
- \* Antennas
- \* Laboratory Test

### Electrical

Frequency:	DC~3GHz
Insertion Loss:	23dB max.
Input VSWR:	1.3 max.
Output VSWR:	1.3 max.
Isolation:	20dB min.
Amplitude Balance:	±0.6dB
Phase Balance:	±8°
Impedance:	50Ω
Average Power:	2W

### Mechanical

Size <sup>*1</sup> :	196*60*20mm
	7.717*2.362*0.787in
Mounting:	4-Φ3.2mm through-hole

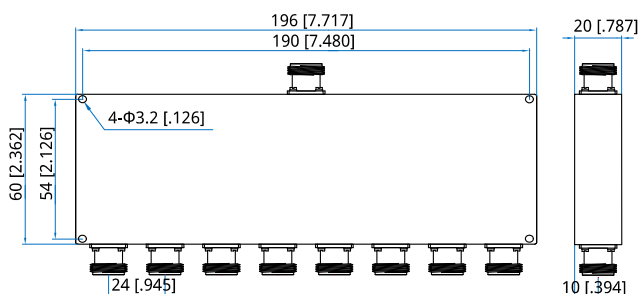
[1] Exclude connectors.

### Environmental

Operation Temperature:	-35~+75°C
------------------------	-----------

Customization is available upon request.

### Outline Drawings



Unit: mm [in]

Tolerance: ±0.5mm [±0.02in]

### How To Order

**QPD8-0-3000-2-N**

Customization is available upon request.